



MENTMORE PARISH NEWSLETTER

Volume 24, Issue 4

December 2017

“DIARY PAGE”



PARISH COUNCIL

The next Parish Council Meeting will be held in the Village Hall at **8pm** on **Wednesday 6th December**. Please see the website www.mentmore.org for full details of parish council minutes. Agendas are published on the website and posted on noticeboards prior to each meeting.

The following meeting will be held on **7th February 2018**.



ANTIQUES, VINTAGE & COLLECTABLES

Looking for presents, something unusual for Christmas? Look no further, come along on **Sunday 10th December** to Mentmore **Village Hall** between **11am and 4pm** and see our wonderful and diverse range of goods, including French vintage items.

Coffee, tea, mulled wine, mince pies and cake will be available.



CAROL SERVICE

You are invited to the Nine Lessons and Carols service, accompanied by St Giles Church Choir, at St. Mary's Church, Mentmore on **Sunday 10th December**. The service, with the renowned Cheddington Festival Choir will begin at **5.00 pm**, followed by seasonal refreshments.



ELK_ HEALTH - A Hundred Ways to Crack 2018

Join us on **Saturday 6th January 2018** in **Mentmore Village Hall** for A Twelfth Night celebration helping us to work out how we can make 2018 our best year yet. From **10.30am - Dinner Party from 7.30pm**

For details, without obligation, please email sat6jan@mentmoreday.com You need only put “I’m interested” in the Subject Box and we’ll keep you posted.

YOUR VILLAGE IN FOCUS



www.mentmore.org

Your Parish Councillors are:

Chairman: Peter Brazier
Councillors: Jonathan Langley
Elizabeth (Liz) Dack
Rob Fletcher
Iain Butler

Clerk: Bridget Knight clerk@mentmore.org

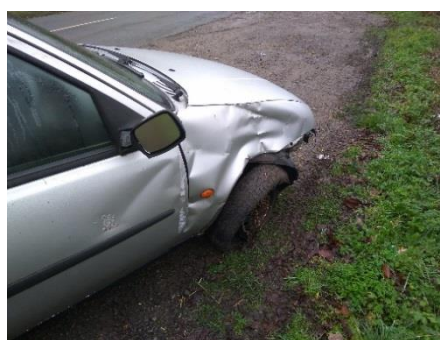
STAG HILL - MENTMORE'S SPEEDING SYMPTOM

In recent years we have seen an increase in incidents on Stag Hill where the residents of Rosebery Mews have had to deal with multiple cars crashing into their railings and hedge. The worst time was the winter of 2014-15 and we have been trying to improve the situation ever since.



The pattern is repetitive, it is always cars driving down the hill past the Stag that lose control just after Dairy Cottage, mount the foot path and hit the fence, occasionally bouncing over to the other side of the road. As is the case for all incidents, speed is a contributing factor.

Fortunately, no one has been injured – yet. The first of this winter happened last month (November) and we are taking some positive action. Ironically, because there have been no injuries this spot is not on the radar of the highways authorities or even the police. We have been able to persuade Bucks County Council to paint a white line on the outside of the road to better delineate the kerb as we think it may be the problem. You may have noticed for the last couple of years we put cones out on the pavement and this was very effective at stopping incidents. We are also going to put up some reflectors on the fence at that point. We do not want to have to resort to unnecessary street furniture such as bollards or speed bumps but if this continues we will have to do something to protect people walking up that hill.



Speeding is an ongoing problem and with more cars passing through the village speeds are increasing. At times the average speed in the village is over 45mph. Not only is it dangerous it is anti-social. We are using all the tools available to us, the MVAS (flashing sign) and Speedwatch. We also continue to lobby the police to get some enforcement.

Please watch your speed and remember if you do not want people speeding in your village, do not speed in other people's villages.

Peter Brazier



NEWS FROM ST. MARY'S CHURCH

What if it's true?

The Christmas adverts are on the telly, it's cold outside, and I've already had two invitations from family for Christmas! I've shared an advert on Facebook for matching pyjamas for owners and dogs - in the hopes that someone will take the hint that me and my dog Alfie would like to celebrate Christmas in style! We've been rehearsing songs for months in the Cheddington choir to sing at 9 Lessons and Carols (on 10th December, 5.00 pm at St Mary's) and the special 12th Night Concert on 6th January at St Giles, Cheddington. Plans for Christmas services are well on the way.

Traditions, treats and treasure, that's what Christmas is about for lots of us, and when dreams and reality merge it makes for a very happy season. But here's the thing: Jesus can be passed off by some as a bit of a dream that never touches our reality – meek and mild – a mythological figure representing an impotent God – unable to stop the suffering in the world, or if not that, then simply irrelevant to the life that they are living...

But what if Emmanuel, God with us, is true? What if, in Jesus Christ, God entered our world so that we would know what it means to be fully human - to live, breathe, walk, talk, in the love of God, allowing his love to transform the way we think, what we do, how we live? The God of the Bible is rooted in history and experience, and the birth of Jesus which we celebrate at Christmas is a truly exceptional birth. At Christmas the Christian church celebrates that in Jesus, God became flesh – a little baby, a human being – and grew in grace and lived among us – fulfilling prophecies, challenging people on the assumptions they had about God, the way they related to other people, their attitude to possessions and their own self interests. Jesus calls us to surrender our own agendas, and listen for God's leading.

C.S. Lewis (best known for writing the Narnia stories) argued that any serious look at the Gospels would reduce Jesus to three words – a liar, a lunatic or God. (Not very politically correct...eh?) But, Lewis argued, if Jesus knew he was not God and chose to deceive others anyway, then he was a liar. If Jesus truly thought he was God but was self-deluded, then he was a lunatic. However, if Jesus was neither a liar nor a lunatic then the third option is inescapable – that he is God, and has the right to be believed and worshipped. I wish you all a very happy Christmas, but more than that, in the words of the apostle Paul (Ephesians 3:17-19), I wish that you "being rooted and established in love, would have the power to know how wide and long and high and deep is the love of Christ, and to know this love that surpasses knowledge – that you may be filled to the measure of all the fullness of God."

Gill Rowell, Team Vicar, Parish of Cheddington with Mentmore

MENTMORE 200 CLUB

YOUR CHANCE TO WIN

£300 in December, £200 in June

£100 in Feb, April, Aug and Oct

All other months £30

PLUS an extra prize of £10 per month

£24 Per Annum or £2 Per Month Per Ticket (Max 10 tickets)

If you would like to support our village church by purchasing a 200 Club ticket, please contact Carol Cox on 07920 140740 or email carolcox48@gmail.com.

September winners:

The 1st prize of £30 went to – Caroline Sargisson of Mentmore.

The 2nd prize of £10 went to – Ivy Rickard.

October winners:

The 1st prize of £100 went to – Sally Smith of Mentmore.

The 2nd prize of £10 went to – Bob Ager of Newton Longville.

November winners:

The 1st prize of £30 went to – Peter Thomas of Leighton Buzzard.

The 2nd prize of £10 went to – Bob Ager of Newton Longville.



December/New Year Services

Sunday 3 rd December	Eucharist at 9.00am at St. Mary's, Mentmore
Sunday 10 th December	Carol Service at 5.00pm at St. Mary's, Mentmore
Sunday 17 th December	Eucharist 9.00am at St. Mary's, Mentmore
Sunday 24 th December	Christmas Eve Family Worship at 10.30 a.m. – come with the children for a Christmas celebration with a difference!
Monday 25 th December	Eucharist at 9.00am at St. Mary's, Mentmore

WALKING THE PARISH FOOTPATHS: MEN/3/1 - Mentmore to Ledburn ½ hour approx.

This path starts in Mentmore on the road out towards Crafton at the top of the hill after the church, almost opposite Laundry Cottages. Enter the field through a sturdy new kissing gate. Note: there is often livestock in this field. You are requested to keep your dog on a lead.

Cross the field from top to bottom, aiming for a solitary oak tree slightly to the right on the far side. To the left of some old barns, you will see a stile (waymarked). The stile is negotiable for most dogs and is the only climb you will need to undertake on this walk. Walk a short distance to your right, 'round a pond visible in the undergrowth. Follow the path across a plank bridge over the drainage ditch and turn to your left on the other side, to follow the edge of the field, with the ditch on your left.



At the end of the field, continue round to your right for a few yards, to where there is an overhanging tree. Here, there is another waymarked wooden bridge, leading into woodland. The way forward is clear, though does not appear well used, and meanders slightly through trees and straight across two small plantations of deciduous trees. You will emerge from a thicket into a field via another plank bridge. The way-marking signs can easily be missed here as the posts have fallen sideways. (Note for the return journey.)

Once more, follow the edge of the field, this time with the drainage ditch on your right. Continue walking under the power lines of a nearby pylon, which run at a slight angle across the path. At the point where the drainage ditch takes a sharp turn to the right, walk straight over the field. Those with good eyesight might be able to see the gap and way-marking sign in the hedge on the far side, but this is not marked from the side where you are standing. You can also see the white painted side of a house which is what you are aiming for.



On reaching the gap, there is another wooden plank bridge to cross. This one is only one plank wide but has a handrail to steady you. The way forward is along a mown, grassy path through some young trees and to the left of the house ahead where you will find yourself coming through a gap into Ledburn village.

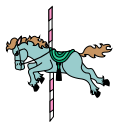
Liz Dack

UPDATES THANKS UPDATES THANKS



MENTMORE FÊTE & BARN DANCE

Mentmore was lit up with excitement and enthusiasm for the revival of the Fete and Barn Dance on 16th September. It was heart-warming to see you all turn out to help with the necessary tasks and then throwing yourselves in to having fun and making the day one to remember. Thank you all so much for your donations and for rolling your sleeves up to make it happen. Without singling anyone out -Jonathan Langley - you are a star and we couldn't have done it without you or the wonderful team who I cajoled into helping run the events - Liz Dack, Diane Armson, Peter Brazier, Rosie Raffle/Rota/Rosettes, Caroline Sargisson and Tadhg (no surname necessary! and Steph Jonhston - huge thanks and appreciation.



We are delighted to be able to give St. Mary's Church, Mentmore £3,750 towards its upkeep.

Caroline Gates



PHOTOGRAPHIC & HISTORY EXHIBITION

After months of research and investigation into the buildings and people of our parish, from early times to the present, the day of our exhibition on the history of Mentmore, Ledburn and Crafton finally arrived.

Over the two days there were an amazing 400+ visitors to the exhibition. Many were local residents coming to find out more about the parish they live in, others were past residents coming back to reminisce and a third group were coming to find out more about family members who lived and worked here generations ago.

The atmosphere throughout the weekend was amazing, with new information and stories coming through on a regular basis. Visitors were finding missing links in their family history, and in some cases photographs of family members that they had never seen before, while others met friends and neighbours who they hadn't seen for years.

All in all, it was a hugely successful event. However, without the hours of research carried out at the record office, discussions with local residents, the years of information, photographs and stories collected on behalf of the parish by our "archivist" and all the recent Facebook posts, this exhibition would not have been possible. The organisers would therefore like to say a huge thank you to all those people and organisations, past and present, who have contributed to the archives and this project in particular.

Karen Thomas on behalf of the Committee



MENTMORE'S BIG TIDY-UP

Sadly, due to local road closures and consequent temporary increase in traffic flow, our planned litter-pick in October had to be cancelled. Thanks to those who went out anyway, when the roads were less busy. The verges have now been mown and there is a rich harvest of litter to be picked, should anyone have the urge. If you do, I can provide the equipment. Our next organised litter-pick will be in April next year, date to be advised.

Liz Dack

DOMESTIC RECYCLING

Christmas Waste - don't forget you can still recycle most items including:

- Christmas Cards (but not foil or glitter ones)
- Paper plates and napkins (unsoiled)
- Paper crackers, hats, card inners (but not snap)
- Clean aluminium foil
- Wrapping paper and gift tags (remove bows and ribbons first)
- Card packaging
- Wrap turkey carcass in old newspaper and put straight in the food waste bin

Recycling & Waste Collection Schedule:

Date: Please make sure your bin is out for 6:30 am	Food Waste Bin:	Recycling Bin: paper, glass, cardboard, plastics, cartons, cans and tins	Waste Bin: non-recyclable or compostable
Thursday : November 30	Collection	Collection	No Collection
Thursday : December 07	Collection	No Collection	Collection
Thursday : December 14	Collection	Collection	No Collection
Thursday : December 21	Collection	No Collection	Collection
Normal Day December 28	Collection	Collection	No Collection
Revised Friday: December 29	Collection	Collection	No Collection
2018			
Thursday : January 04	Collection	No Collection	Collection



Bucks Owl and Raptor Group – BORG

(www.giveahoot.org.uk)



We've had a very mixed set of results this year, with some areas of Bucks doing really well and others, like our own, not so well. Although the season started off with several confirmed instances of barn owls, tawnies and kestrels using the boxes we have provided, the end of year result was a little disappointing.

Our only kestrel began the season in a new box with a clutch of five eggs. Unfortunately, at about the same time as hatching began, one of the adults disappeared (presumed dead) and as result the nest ultimately failed. The remaining adult continued to be seen locally so we are hopeful that it will find a new mate and come back to breed successfully next year. We did however have a successful brood of tawny owls using a barn owl box and two further barn owl boxes with successful broods. Unfortunately, our resident little owls were also less successful this year. At the beginning of the breeding season their "old" home was occupied by a barn owl (the intended species for that particular box), so we provided a brand new box, specially designed for little owls. They took to the box immediately it was installed, but for reasons unknown only one youngster fledged successfully.

Overall though, this year has been relatively good for our owl and raptor populations and as a result our group will be sending in over 130 nest records to the BTO which is our highest ever number. The table below shows how many birds our ringers processed during the year – this information is also sent to the BTO as part of the national ringing scheme.

	Adults	Pulli (chicks)	Retraps	Total
Barn Owl	17	115	5	137
Tawny Owl	2	22	0	24
Little Owl	1	2	1	4
Kestrel	0	44	0	44
Stock Dove	3	9	0	12
Totals	23	192	6	221

The breeding season is now over, but Lynne and I will no doubt be out and about during the winter months checking on the boxes and making sure that they are ready for next year's breeding season. If you know you have owls or kestrels in your area and are interested in having a box on your land and would like some advice please feel free to contact me.

Karen Thomas

WANT TO GET INVOLVED

It will soon be that time of year again when those of you who like to take a more active role in wildlife observation and conservation can try one of the following:

RSPB – Big Garden Bird Watch Saturday 27th and Sunday 29th January 2018: The survey provides the RSPB with an important snapshot of garden bird populations in winter and has helped to highlight some dramatic declines in UK garden birds. You can register to take part at www.rspb.org.uk/birdwatch.



BTO – National Nest Box Week: National Nest Box Week, is organised by the British Trust for Ornithology and founding sponsor Jacobi Jayne & Company and runs from **14th to 21st February**. For more information visit the BTO/NNBW web site at: www.bto.org/nnbw/index.htm. Why not put up a nest box for your garden birds or sponsor a box for one of our local owls or kestrels through BORG!

Karen Thomas

ADVERTISING FOR LOCAL EVENTS & BUSINESSES

Make your Computer Smile!

**Internet & Email * Virus removal * Wireless Networks
Need PC faster? * Tablets & Smartphones**

**Experienced Technology Professional will assist
with all your computer requirements.**



***Home in Cheddington (9 years)*
Business in Berkhamsted (12 years)
*All surrounding areas covered***



No Fix – No Fee Guarantee

Call Mark on 07789 304 274 or 07497 746 010

EVENTS TO LOOK OUT FOR SPRING 2018

Mentmore Plant Sale – 21st April 2018

Mentmore Arts Festival – The 10th Mentmore Arts Festival will be held over the May Bank Holiday from Saturday 26th May to Monday 28th May 2018.



INDOOR CHRISTMAS MARKET

**Sunday 10th December
11.00 am to 4.00 pm**

MENTMORE VILLAGE HALL

**BEAUTIFUL ITEMS FOR CHRISTMAS
AND THE HOME**

**GIFTS – VINTAGE – NEW – UNIQUE –
FRENCH**

**HOMEMADE MINCE PIES – CAKES
MULLED WINE – TEA – COFFEE**

Sorry, no payment card facility



IN MEMORIAM

It is with sadness that we announce the passing,
on 16th September 2017 of Mark Swinbank.

MARK SWINBANK
25 July 1949 – 16 September 2017

Mark was a man who quietly made a positive and significant difference to the lives of very many people and was a faithful friend to many

Mark moved to Mentmore in the early 1990s and was one of the first to live in Rosebery Mews. He was Chairman of the Management Committee for around 24 years. He cared deeply about the village, helping to get the railings repaired and maintained and often went out litter-picking long before our more “official” events. He had a love of music, railways, parties, Billy Elliott, Watford Football Club travel and adventure. He was a volunteer at Ashridge for the National Trust and also at Quainton Railway.

He loved his home in Rosebery Mews, which was one of three places very special to him, the other two being the Isle of Lewis in the Hebrides, and Bhutan which he visited many times.

Mark had a quiet and strong Christian faith, but was also greatly influenced by the Buddhism of Bhutan and delighted in the happiness of the people. He wrote a book “The Road to Kamji” which shared his experiences, knowledge and love of life.

Mark will be remembered for his kindness, his mentoring and his gentle way of being and will be greatly missed by his many friends.

If you have an item which you would like included in the next Newsletter (March, April and May) please contact either Elizabeth Dack (Tel 661309 /email crackerdack@aol.com) or Karen Thomas (Tel 661509 / email karen.thomas@dial.pipex.com)
Newsletter deadline: 15th February 2018

To offset costs we are looking for small business advertising. Would you like to sponsor an issue? Your ads could be anything from one liners to more striking boxes and graphics. For more information please contact Liz or Karen.

This newsletter was sponsored by Broadnet Systems & Solutions Ltd.